



Installation Guide for Undermount Sinks

To ensure this product is installed properly, please read these instructions carefully before you begin. ALLORA USA recommends that all products should be installed by a professional, experienced installer.

ALLORA USA is not responsible for any damages due to improper installation. Also be sure your installation conforms to local codes.

Before installing the sink, inspect it for damage. DO NOT install a damaged unit. Notify your ALLORA USA distributor of any damage. If a sink is damaged, return it in its original packing.

RECOMMENDED TOOLS & MATERIALS



Safety Goggles



Putty Knife



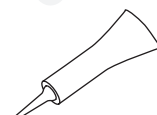
Adjustable Wrench



Plumbers' Putty



Channel Lock Pliers



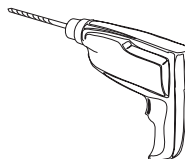
Silicone Adhesive



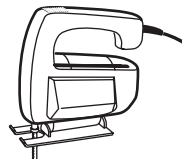
Tape Measure



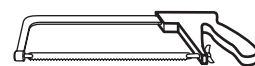
Pipe Wrench



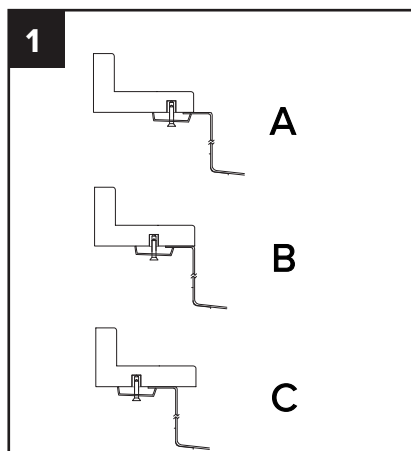
Drill



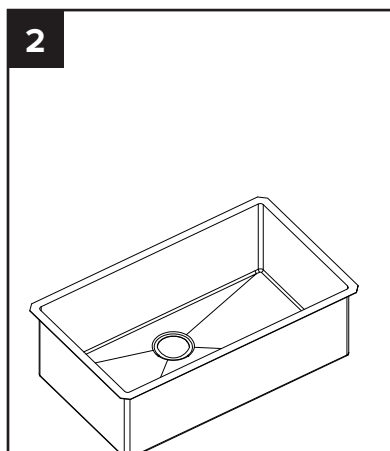
Saber Saw



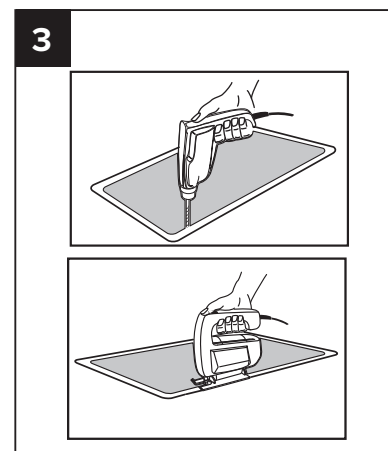
Hacksaw



Before starting installation, determine the desired reveal type. Allora USA recommends a negative reveal cutout (C), but a flush (B) or positive (A) reveal is also possible.

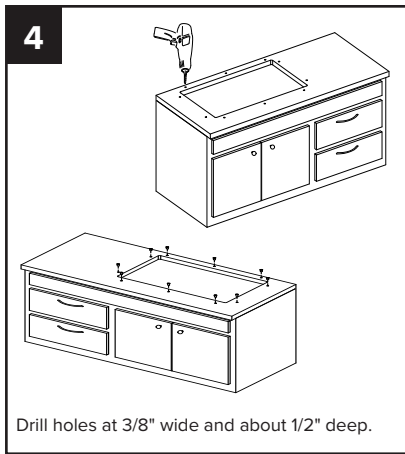


Compare cutout template to the sink, ensuring that the cutout size is accurate. Place template in the desired location of the countertop. Check that the placement leaves enough space for the faucet installation.



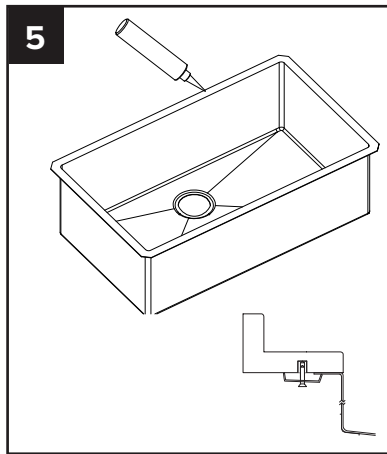
Trace template along the surface of the countertop. Carefully cut using the appropriate saw intended for your material.

Installation Guide for Allora USA Undermount Sinks

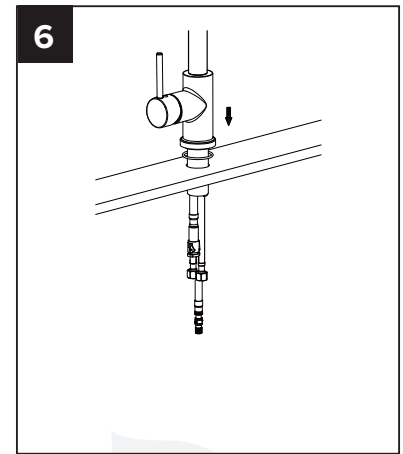


Drill holes at 3/8" wide and about 1/2" deep.

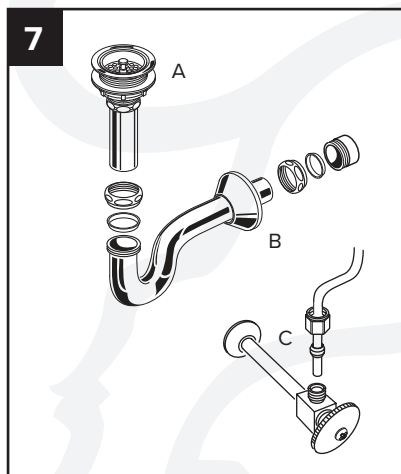
Turn countertop upside-down and center sink over the cutout. Mark and pre-drill clip locations on the sink's rear edge. Install the clip anchors. The holes should be placed about 1/2" from the outer sink edge. Install anchors with sealant and tap into place with a hammer.



Place a bead of silicone around the top lip of the sink. Install sink to countertop with mounting hardware. Verify that the countertop cutout is aligned with the sink. Securely tighten the clips on the sink's back edge. Clean any excess silicone with acetone.



Install faucet, following manufacturer instructions.



Install strainer according to manufacturer specifications.

Connect P-trap (B) to strainer (A). Connect water supply lines to faucet (C). Run water to check sink for leaks.



Run water to check sink for leaks. Clean off any excess sealant with acetone.

Need help?

For technical assistance or replacement parts, please contact Allora USA Customer Service and one of our representatives will be happy to assist you:

Call 571-291-3484 or email Customerservice@allorausea.com



Scan the QR code
to register your Allora
USA product today!